



India Meteorological Department  
(Ministry of Earth Sciences)

NATIONAL BULLETIN NO. 12 (LAND/01/2024)

TIME OF ISSUE: 0140 HOURS IST

DATED:05.08.2024

FROM: INDIA METEOROLOGICAL DEPARTMENT (FAX NO. 24643965/24699216/24623220)

TO: CONTROL ROOM, NDM, MINISTRY OF HOME AFFAIRS (FAX.NO. 23093750)

CONTROL ROOM NDMA (FAX.NO. 26701729)

CABINET SECRETARIAT (FAX.NO.23012284, 23018638)

PS TO HON'BLE MINISTER FOR S & T AND EARTH SCIENCES (FAX NO.23316745)

SECRETARY, MOES (FAX NO. 24629777)

H.Q. (INTEGRATED DEFENCE STAFF AND CDS) (FAX NO. 23005137/23005147)

DIRECTOR GENERAL, DOORDARSHAN (23385843)

DIRECTOR GENERAL, AIR (23421105, 23421219)

PIB MOES (FAX NO. 23389042)

UNI (FAX NO. 23355841)

D.G. NATIONAL DISASTER RESPONSE FORCE (NDRF) (FAX NO. 26105912, 2436 3260)

DIRECTOR, PUNCTUALITY, INDIAN RAILWAYS (FAX NO. 23388503)

CHIEF SECRETARY, WEST BENGAL (FAX NO. 033-22144328)

CHIEF SECRETARY, JHARKHAND (FAX NO. 0651-2400255)

CHIEF SECRETARY, CHHATTISGARH (FAX NO. 0771-2221206)

CHIEF SECRETARY, BIHAR (FAX NO. 0612-2217085)

CHIEF SECRETARY, MADHYA PRADESH (FAX NO. 0755-2441076)

CHIEF SECRETARY, UTTAR PRADESH (FAX NO.0522-2239283)

CHIEF SECRETARY, RAJASHTHAN (FAX NO. 0141-2227114)

CHIEF SECRETARY, GUJARAT (FAX NO. 079-23250305)

**Sub: Deep Depression over northwest Madhya Pradesh and adjoining Northeast Rajasthan**

The deep depression over northwest Madhya Pradesh and adjoining southwest Uttar Pradesh moved west-northwestwards with a speed of 13 kmph during past 6 hours and lay centered at 2330 hours IST of 4<sup>th</sup> August over northwest Madhya Pradesh and adjoining Northeast Rajasthan near latitude 26.0°N and longitude 77.6°E, about 120 km west-northwest of Jhansi (Uttar Pradesh), 80 km north of Shivpuri (Madhya Pradesh), 120 km east of Sawai Madhopur (Rajasthan) and 200 km east-southeast of Jaipur (Rajasthan).

It is likely to move west-northwestwards across northwest Madhya Pradesh and northeast Rajasthan and weaken gradually into a depression during next 6 hours.

**Warnings (Graphics Attached):**

**(i) Rainfall Warning:**

**East Madhya Pradesh:**

Light to moderate rainfall at most places with **heavy rainfall** at isolated places is very likely on 5<sup>th</sup> August.

**West Madhya Pradesh:**

Light to moderate rainfall at most places with **heavy to very heavy rainfall at a few places with extremely heavy rainfall** at isolated places is very likely till 5<sup>th</sup> August morning and **heavy rainfall** at isolated places till 6<sup>th</sup> August.

**East Uttar Pradesh:**

Light to moderate rainfall at many places is very likely with **heavy rainfall** at isolated places during 5<sup>th</sup>-6<sup>th</sup> August.

**West Uttar Pradesh:**

Light to moderate rainfall at many places with **heavy rainfall** at isolated places is very likely over West Uttar Pradesh on 5<sup>th</sup> August and **very heavy rainfall** at isolated places over Southwest Uttar Pradesh till 5<sup>th</sup> August morning.

**East Rajasthan:**

Light to moderate rainfall at most places with **heavy to very heavy & extremely heavy rainfall** at isolated places till 5<sup>th</sup> August morning. Light to moderate rainfall at most places with isolated **heavy rainfall** is very likely to continue at isolated places on 5<sup>th</sup> August.

**West Rajasthan:**

Light to moderate rainfall at most places with **heavy to very heavy rainfall** at isolated places is very likely during 5<sup>th</sup> - 6<sup>th</sup> August.

**Gujarat region:**

Light to moderate rainfall at most places is very likely with **heavy to very heavy rainfall** at a few places on 5<sup>th</sup> and **heavy rainfall** at isolated places on 6<sup>th</sup> August.

**Saurashtra & Kutch:**

Light to moderate rainfall at many places is very likely on 5<sup>th</sup> August.

**Madhya Maharashtra:**

Light to moderate rainfall at most places is very likely with **heavy rainfall** at a few places during 5<sup>th</sup> to 6<sup>th</sup> August, **very heavy rainfall** at isolated places also likely on 5<sup>th</sup> August.

**Konkan & Goa:**

Light to moderate rainfall at most places with **heavy rainfall** at a few places is very likely during 5<sup>th</sup> to 6<sup>th</sup> August.

**(ii) Flash Flood Guidance (Graphics Attached):**

Low to Moderate flash flood risk is likely over few watersheds & neighbourhood of West Madhya Pradesh and adjoining East Rajasthan Met Sub-divisions during next 24 hours. Surface runoff/ Inundation may occur at some fully saturated soils & low-lying areas over AoC as shown in map due to expected rainfall occurrence in next 24 hours.

Low to Moderate flash flood risk is likely over few watersheds & neighbourhood of South Gujarat Region, North Konkan & Goa, North Madhya Maharashtra, Marathawada and adjoining Vidarbha Met Sub-divisions during next 24 hours. Surface runoff/ Inundation may occur at some fully saturated soils & low-lying areas over AoC as shown in map due to expected rainfall occurrence in next 24 hours.

**(iii) Wind warning:**

- Strong wind speed reaching 40-50 kmph gusting to 60 kmph is very likely over northwest Madhya Pradesh and adjoining southwest Uttar Pradesh during next 6 hours and gradually decrease thereafter.
- Strong wind speed reaching 35-45 kmph gusting to 55 kmph is very likely over West Madhya Pradesh and adjoining East Rajasthan & West Uttar Pradesh on 5<sup>th</sup> August.

**(iv) Impact Expected**

- Localized Flooding of roads, water logging in low lying areas and closure of underpasses mainly in urban areas of the above region.
- Occasional reduction in visibility due to heavy rainfall.
- Disruption of traffic in major cities due to water logging in roads leading to increased travel time.
- Surface runoff/ inundation may occur at some fully saturated soils & low-lying areas
- Minor damage to kutcha roads.
- Possibilities of damage to vulnerable structure.
- Localized Landslides/Mudslides/landslips/mud slips/land sinks/mud sinks.
- Damage to horticulture and standing crops in some areas due to inundation.
- It may lead to riverine flooding in some river catchments (for riverine flooding please visit Web page of CWC)

**(v) Action Suggested**

- Check for traffic congestion on your route before leaving for your destination.
- Follow any traffic advisories that are issued in this regard.
- Avoid going to areas that face the water logging problems often.
- Avoid staying in vulnerable structure.

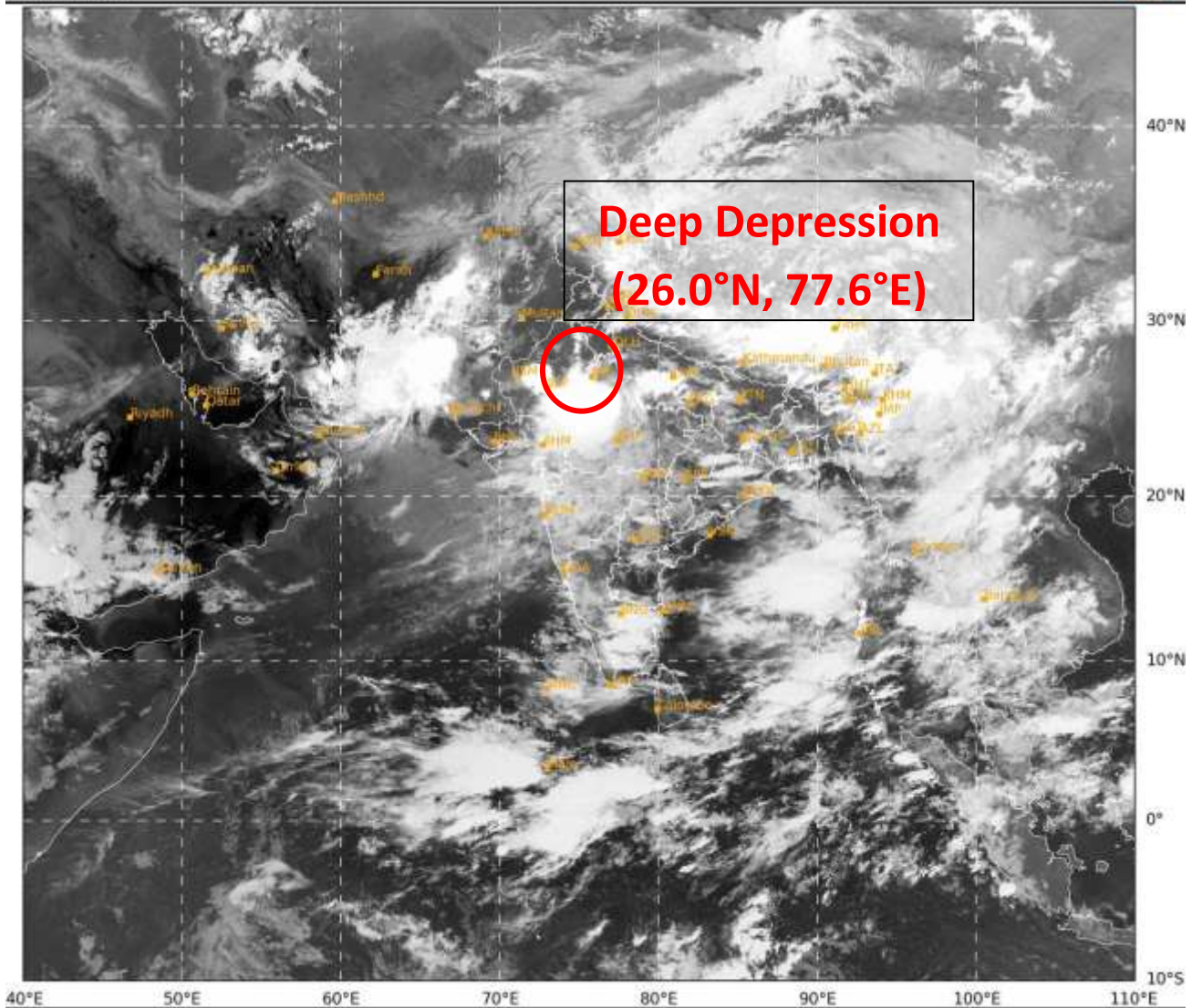
**(vi) Agromet advisories for Heavy Rainfall likely over various parts of the country**

- Make provision for draining out excess water from crop fields to avoid water stagnation in West Bengal, Sub Himalayan West Bengal, Odisha, Jharkhand, Bihar, Rajasthan, Madhya Pradesh, Chhattisgarh.
- Provide mechanical support to horticultural crops and staking to vegetables.

**Next bulletin will be issued at 0830 hours IST of today, the 5<sup>th</sup> August, 2024.**

**(Dr. Shashi Kant)**  
**Scientist-D, Cyclone Warning Division, New Delhi**

*Copy to: ACWC Kolkata/RMC, New Delhi/RMC, Nagpur/MC, Ranch/MC, Raipur/MC, Patna/MC, Bhopal/MC, Jaipur/CWC Bhubaneswar/MC, Lucknow/RMC, Mumbai/MC, Ahmedabad*

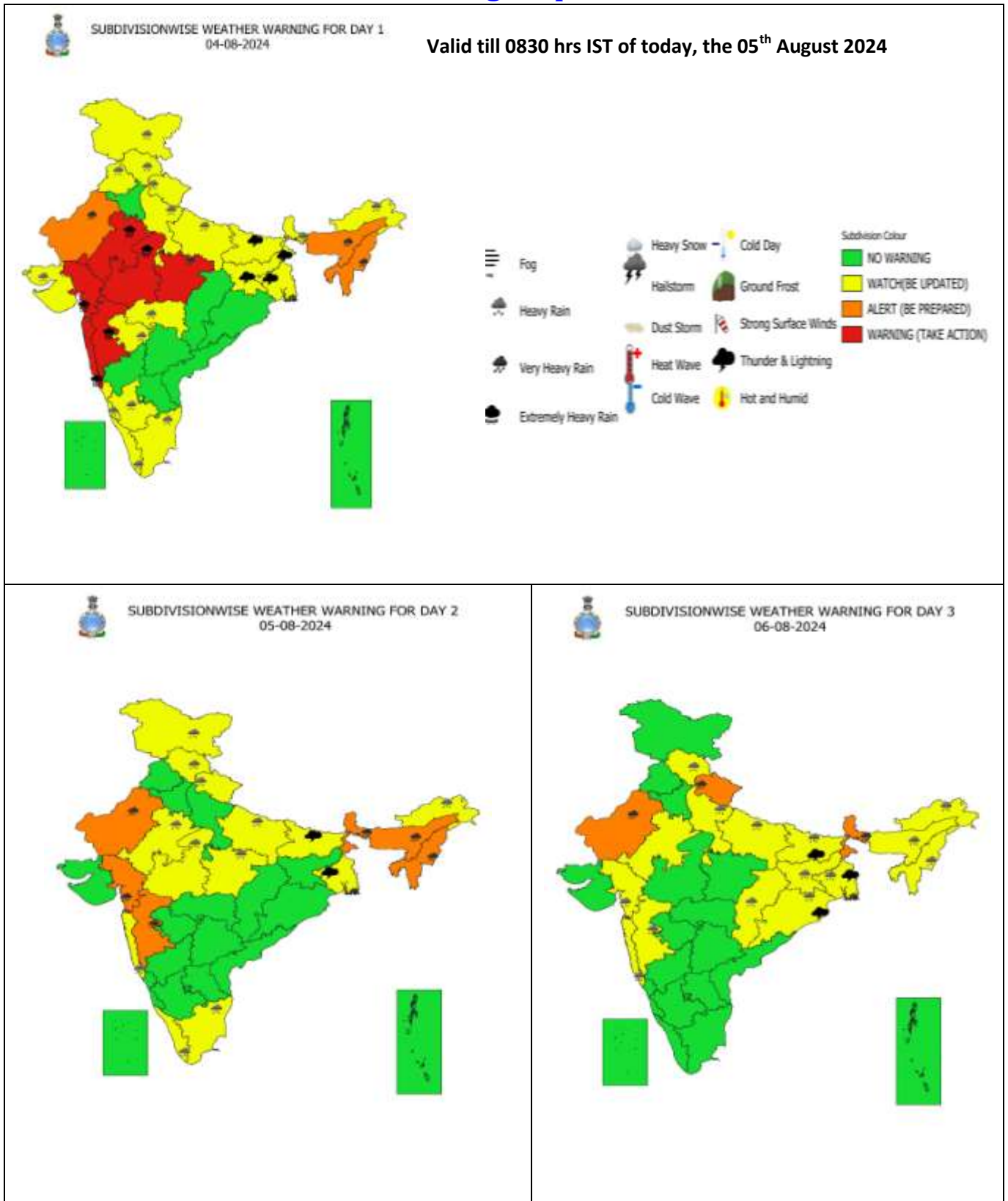


727

1006

IMD, DELHI




## Warning Graphics



- Action may be taken based on **ORANGE AND RED COLOUR** warnings.
- Vulnerable regions likely urban and hilly areas action may be initiated for heavy rainfall warning.
- As the lead period increases forecast accuracy decreases.

### Flash Flood Guidance

<p><b><u>24 hours Outlook for the Flash Flood Risk (FFR) till 1130 IST of 05-08-2024 :</u></b></p> <p><b>Low to Moderate flash flood risk</b> likely over few watersheds &amp; neighbourhoods of <b>South Gujarat Region, North Konkan &amp; Goa, North Madhya Maharashtra, Marathawada and adjoining Vidarbha</b> Met Sub-divisions during next 24 hours.</p> <p>Surface runoff/ Inundation may occur at some fully saturated soils &amp; low-lying areas over AoC as shown in map due to expected rainfall occurrence in next 24 hours.</p>	<p>Product: GFS FFR   Timescale: 24 hr   Region: "INDIA" Product Date: 2024-08-04 06:00 UTC   Valid Date: 2024-08-05 06:00 UTC</p>
<p><b><u>24 hours Outlook for the Flash Flood Risk (FFR) till 1130 IST of 05-08-2024 :</u></b></p> <p><b>Low to Moderate flash flood risk</b> likely over few watersheds &amp; neighbourhoods of <b>West Madhya Pradesh and adjoining East Rajasthan</b> Met Sub-divisions during next 24 hours.</p> <p>Surface runoff/ Inundation may occur at some fully saturated soils &amp; low-lying areas over AoC as shown in map due to expected rainfall occurrence in next 24 hours.</p>	<p>Product: WRF FFR   Timescale: 24 hr   Region: "INDIA" Product Date: 2024-08-04 06:00 UTC   Valid Date: 2024-08-05 06:00 UTC</p>

<b>Flash Flood Risk</b>	
	<b>High Risk (Take Action)</b>
	<b>Moderate Risk (Be Prepared)</b>
	<b>Low Risk (Be Updated)</b>



**OBSERVED AND FORECAST TRACK ALONGWITH WIND DISTRIBUTION IN ASSOCIATION WITH DEEP DEPRESSION OVER NORTHWEST MADHYA PRADESH AND ADJOINING NORTHEAST RAJASTHAN BASED ON 1800 UTC OF 04th AUGUST, 2024.**



DATE/TIME IN UTC  
 IST=UTC + 0530  
 L: LOW PRESSURE AREA  
 WML: WELL MARKED LOW PRESSURE AREA  
 D: DEPRESSION (17-27 KT)  
 DD: DEEP DEPRESSION (28-33 KT)  
 CS: CYCLONIC STORM (34-47 KT)  
 SCS: SEVERE CYCLONIC STORM (48-63KT)  
 VSCS: VERY SEVERE CYCLONIC STORM (64-89 KT)  
 ESCS: EXTREMELY SEVERE CYCLONIC STORM (90-119 KT)  
 SuCS: SUPER CYCLONIC STORM ( $\geq$  120 KT)

● LESS THAN 34 KT  
 ○ 34-47 KT  
 ●  $\geq$  48 KT  
 — OBSERVED TRACK  
 — FORECAST TRACK  
 — CONE OF UNCERTAINTY  
 — AREA OF MAXIMUM SUSTAINED WIND SPEED:  
 — 40-50 KMPH GUSTING TO 60 KMPH